

Top Stories This Week

- April-July fiscal deficit at Rs 3.85 lakh crore versus Rs 3.25 lakh crore (YoY)
- Q1FY16 GDP growth at 7 percent versus 7.5 percent (QoQ); 6.7 percent (YoY)
- RBI named SBI & ICICI Bank as domestic systemically important banks (D-SIBs)
- Petrol prices cut by Rs 2/litre & diesel by 50 paise/litre.
- Government allows Reliance Industries (RIL) to sell LPG to cooking gas marketers.
- IOC set to plan USD 3 billion petchem plant in Iran: FE
- August Auto Sales: Tata Motors Total Sales Down 0.5% At 40,680 Units (YoY). TVS Motor Total Sales Up % At 2.27 Lakh Units Vs 2.25 Lakh Units (YoY). Hero MotoCorp: Total Sales Down 14% At 4.8 Lakh Units Vs 5.58 Lakh Units (YoY)
- Max Life looks to sell 22% to PE Firm (ET)
- Jet Airways board approves merger of Jet Lite with company.
- SAIL to spend Rs 7,500 crore on expansion and modernization.
- Henkel AG plans to exercise option to buy 26 percent stake in Jyothy Labs: ET
- Cipla acquires rights to market Percos Skincare products: ET

Weekly Indices Change

Index	Close	P. Close	Chg. (%)
SENSEX	25201	26392	-4.51
NIFTY	7655	8001	-4.32
MIDCAP	10359	10759	-3.72
SMLCAP	10605	10992	-3.52
METAL	7116	7401	-3.85
OIL&GAS	8539	8853	-3.55
AUTO	16983	18003	-5.67
TECK	5989	6110	-1.98
BANKEX	18437	19703	-6.43
IT	10970	11188	-1.95
FMCG	7610	7819	-2.67
HC	17136	17645	-2.88
PSU	6521	6910	-5.63
CD	10639	11102	-4.17
POWER	1729	1863	-7.19
CG	15432	16326	-5.48
REALTY	1242	1277	-2.74

Global Indices

DOW	16102	16643	-3.25
NASDAQ	4683	4828	-3.00
FTSE	6042	6247	-3.28
NIKKEI	17792	19136	-7.02
HANGSENG	20840	21612	-3.57

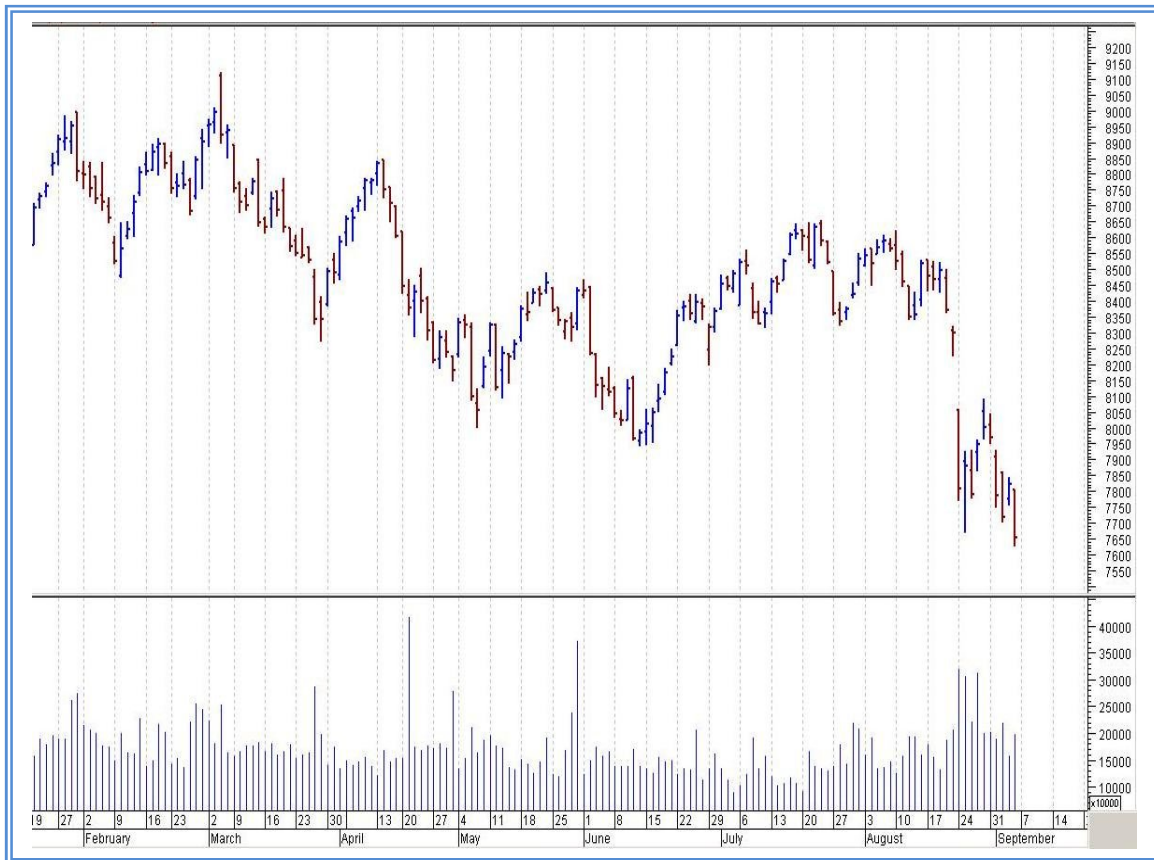
Top Gainers Weekly

Scrip	Price	% Chg
Dishman Pharma	254.80	28.20
Essar Oil Ltd.	191.80	17.78
Welspun Enterprises	60.65	17.77
Sun TV Network Ltd.	387.65	13.88
PC Jeweller Ltd.	388.20	9.92

Top Losers Weekly

Scrip	Price	% Chg
NCC	58.10	21.43
Financial Technologies	100.10	16.83
Symphony	1880.65	15.33
Adani Transmission Ltd	28.45	14.56
Kaya Ltd	1083.50	14.03

Nifty Corner



Support & Resistance						
S3	S2	S1	Nifty	R1	R2	R3
7300	7400	7550	7655	7750	7850	7900
Moving Averages						
20DMA		50DMA		100DMA		200DMA
8295		8395		8345		8445

Market Commentary

A fresh setback for global stocks along with disappointing economic data at home triggered a sharp slide on the domestic bourses last week. The 50-unit CNX Nifty fell below the psychological 8,000 mark. The Sensex hit its lowest closing level in more than 13 months. The Nifty hit its lowest closing level in more than a year. There was heavy selling of Indian stocks by foreign portfolio investors (FPIs) during the week. FPIs sold shares worth a net Rs 3068.49 crore into the secondary equity market during four trading session from 31 August to 3 September 2015. For the next week nifty likely to trade in the range between 7750 – 7850 in the upper side and 7550 – 7400 in the lower side.

Stocks at 52 wk High

Scrip	Cmp
Abbott India	5213.50
United Nilgiri	353.20
--	--
--	--
--	--

Stocks at 52 wk Low

Scrip	Cmp
Bank of India	128.70
CESC	489.55
Financial Tech	100.10
HDIL	57.00
ICICI Bank	257.75

FII Activity

Date	Figures in crore
31/08	-551.19
01/09	-675.32
02/09	-1573.42
03/09	-394.31
04/09	-1287.12
NET	-4481.36

DII Activity

Date	Figures in crore
31/08	478.59
01/09	681.93
02/09	880.27
03/09	840.35
04/09	1128.7
NET	4009.84

Weekly Stock Idea

Scrip	B/S	Cmp	Tgt
BHARTI AIRTEL	B	350	365
COALINDIA	B	347	360
IOC	B	408	425
INFY	S	1077	1041
LUPIN	S	1863	1815

Buy on dips & Sell on rise with Stop-loss of 3%

Volume Breakout Stocks

Scrip	Cmp
Jyothy Labs	319.90
NCC	58.10
Financial Tech	100.10
NTPC	114.50
Shemaroo Ent	274.25

Week Ahead

MAJOR RESULTS/AGM MEETING THIS WEEK:

07 SEP: KSOILS, ONGC, HINDALCO, POWERGRID, BEML,

09 SEP: RECLTD

10 SEP: NBCC, NHPC, COALINDIA, DISHMAN

11 SEP: IFCI

VISIT US AT: WWW.INDIRATRADE.COM

Disclaimer

This report is for private circulation within the Indira Group. This report is strictly confidential and for information of the selected recipient only and may not be altered in any way, transmitted to, copied or distributed, in part or in whole, to any other person or to the media or reproduced in any form. This report should not be construed as an offer or solicitation to buy or sell any securities or any interest in securities. It does not constitute a personal recommendation or take into account the particular investment objectives, financial situations, or any such factor. The information, opinions estimates and forecasts contained here have been obtained from, or are based upon, sources we believe to be reliable, but no representation of warranty, express or implied, is made by us to their accuracy or completeness. Opinions expressed are our current opinions as of the date appearing on this material only and are subject to change without notice.